

# WELCOME TO Grand PRAIRIE

DALLAS / FORT WORTH METROPLEX



2023 VISITOR'S GUIDE

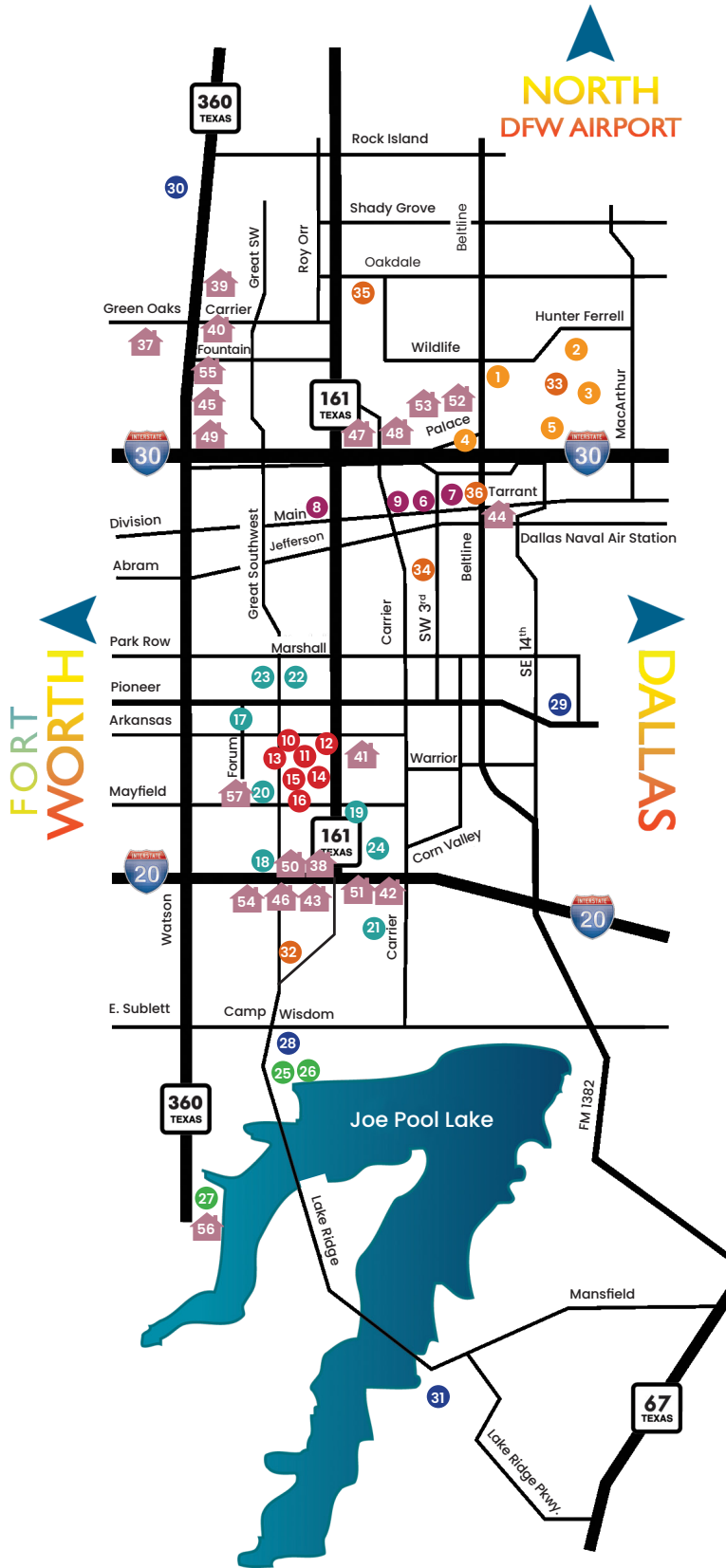
VISIT  
GRAND PRAIRIE

—VISITGRANDPRAIRIETX.COM—

# WHAT'S INSIDE

GRAND PRAIRIE HAS SO MUCH TO DO AND SEE AND WE DON'T WANT YOU TO MISS ANYTHING! ALL ENTERTAINMENT IS BROKEN INTO OUR DISTRICTS WITH ATTACHED PAGE NUMBERS SO IT'S EASY FOR YOU TO GET AROUND!

| MAP#                              | ENTERTAINMENT DISTRICT - pg. 4 | MAP#                                    | HOTELS & LODGING - pg. 20               |
|-----------------------------------|--------------------------------|-----------------------------------------|-----------------------------------------|
| 1                                 | ACTION PARK                    | 37                                      | BEST WESTERN PLUS                       |
| 2                                 | LONE STAR PARK                 | 38                                      | CANDLEWOOD SUITES                       |
| 3                                 | MAJOR LEAGUE CRICKET           | 39                                      | COMFORT SUITES                          |
| 4                                 | RIPLEY'S ENTERTAINMENT         | 40                                      | COUNTRY INN & SUITES                    |
| 5                                 | TEXAS TRUST CU THEATRE         | 41                                      | COURTYARD BY MARRIOTT                   |
| <b>DOWNTOWN DISTRICT - pg. 6</b>  |                                | 42                                      | HOLIDAY INN EXPRESS                     |
| 6                                 | FARMERS MARKET                 | 43                                      | HOME2 SUITES BY HILTON                  |
| 7                                 | FIREHOUSE GASTRO PARK          | 44                                      | HOWARD JOHNSON EXPRESS                  |
| 8                                 | GP HISTORICAL MUSEUM           | 45                                      | HYATT PLACE                             |
| 9                                 | UPTOWN THEATER                 | 46                                      | LAQUINTA INN & SUITES                   |
| <b>EPIC CENTRAL - pg. 8</b>       |                                | 47                                      | LAQUINTA INN & SUITES                   |
| 10                                | THE EPIC                       | 48                                      | MOTEL 6                                 |
| 11                                | EPIC WATERS INDOOR WATERPARK   | 49                                      | MOTEL 6                                 |
| 12                                | CHICKEN N PICKLE               | 50                                      | QUALITY INN                             |
| 13                                | BOLDER ADVENTURE PARK          | 51                                      | STAYBRIDGE SUITES                       |
| 14                                | MAIN EVENT                     | 52                                      | STUDIO 6                                |
| 15                                | PLAYGRAND ADVENTURES           | 53                                      | SUPER 8                                 |
| 16                                | THE SUMMIT                     | 54                                      | SUPER 8                                 |
| <b>SHOPPING DISTRICT - pg. 12</b> |                                | 55                                      | TRU BY HILTON                           |
| 17                                | ASIA TIMES SQUARE              | 56                                      | LOYD PARK CABINS & LODGE                |
| 18                                | GRAND PRAIRIE PREMIUM OUTLETS  | 57                                      | TRADERS VILLAGE RV PARK<br>COMING SOON! |
| 19                                | IKEA                           |                                         | HILTON GARDEN INN                       |
| 20                                | TRADERS VILLAGE                |                                         | HOMEWOOD SUITES                         |
| 21                                | CINEMARK MOVIE 16              |                                         | RESIDENCE INN                           |
| 22                                | FORUM BOWLING LANES            | <b>HIKING &amp; RECREATION - pg. 22</b> |                                         |
| 23                                | FORUM ROLLER WORLD             | 32                                      | FISH CREEK LINEAR PARK                  |
| 24                                | PREMIER LUX CINE               | 33                                      | LONE STAR TRAIL                         |
| <b>LAKE PARKS - pg. 14</b>        |                                | 34                                      | MCFALLS PARK                            |
| 25                                | BLUE SUNSHINE PATIO & BAR      | 35                                      | MIKE LEWIS PARK                         |
| 26                                | LYNN CREEK PARK & MARINA       | 36                                      | TURNER PARK                             |
| 27                                | LOYD PARK CABINS & LODGE       | <b>GOLF - pg. 24</b>                    |                                         |
| <b>MORE INFORMATION</b>           |                                | 28                                      | LYNN CREEK GOLF RANGE                   |
| VIA GRAND PRAIRIE - pg. 25        |                                | 29                                      | PRAIRIE LAKES GOLF COURSE               |
| LIVE MUSIC - pg. 26               |                                | 30                                      | RIVERSIDE GOLF COURSE                   |
| MEETING SPACES - pg. 28           |                                | 31                                      | TANGLE RIDGE GOLF COURSE                |
| FOOD - pg. 29                     |                                |                                         |                                         |
| ANNUAL EVENTS pg. 31              |                                |                                         |                                         |
| DFW MAP - pg. 32                  |                                |                                         |                                         |
| COUPONS - pg. 34                  |                                |                                         |                                         |
| TOURIST CENTER - pg. 38           |                                |                                         |                                         |





# EXPLORE

## THE ENTERTAINMENT DISTRICT

The Entertainment District in Grand Prairie is where you can find all types of entertainment from live horse racing to concerts & shows to a cricket game & so much more!

### ACTION PARK

Action Park GP features a Pro Shop with all your favorite skate shoes, clothing, skateboards and bike parts. This Skatepark is also equipped with a BMX style track, trail jump lines, pump track, foam pit, music stage, and rental bikes. Take lessons, attend summer camps or host a birthday parties or private event here!

1002 Lone Star Parkway  
972-262-4479 • [actionparkgp.com](http://actionparkgp.com)

### LONE STAR PARK

A good time you can bet on! Catch the fun and excitement of world-class Thoroughbred and Quarter horse racing at Lone Star Park. The Grandstand is a seven-level, glass-enclosed, climate-controlled building with penthouse suites, terraced track-side dining room, box seats and outdoor seating. You can also watch simulcast horse racing from around the country at Bar & Book.



1000 Lone Star Parkway  
972-263-7223 • [lonestarpark.com](http://lonestarpark.com)

### MAJOR LEAGUE CRICKET

Coming soon, the former Texas AirHogs Stadium, will now be a Major League Cricket Stadium! The stadium will host the Texas franchise of Major League Cricket, and serve as a base for the USA Cricket National team and its premier high performance center.

1600 Lone Star Parkway  
[majorleaguecricket.com](http://majorleaguecricket.com)

### RIPLEY'S BELIEVE IT OR NOT!

Five of the most unique and entertaining attractions in one building. In Louis Tussaud's Palace of Wax, come face to face with lifelike figures from Hollywood, horror, the old west, history, childhood fantasy and the life of Christ. Ripley's Odditorium showcases eye-popping galleries displaying the most beautiful, bizarre and fascinating oddities from around the world. Get lost in the Ripley's Enchanted Mirror Maze. Test your skills at Ripley's Impossible LaseRace and bump, dip and shake your way through the 7D Moving Theater. It's going to be a bumpy ride! Open year round. Group rates available.



601 E. Palace Parkway  
972-263-2391 • [ripleys.com/grandprairie](http://ripleys.com/grandprairie)

### TEXAS TRUST CU THEATRE AT GRAND PRAIRIE

The 6,350-seat live performance hall hosts sell-out crowds to popular concerts, shows and events. Located 1/2 mile north of I-30 on Beltline Road, Texas Trust CU Theatre is one of the most technologically sophisticated indoor theaters in America. The venue hosts a wide range of shows from music concerts to comedy, magic, corporate events and more.

1001 Texas Trust Way  
972-854-5050  
[texastrustcutheatre.com](http://texastrustcutheatre.com)

LOCAL TIP!  
GET THERE EARLY  
FOR PARKING AND  
ENJOY A DRINK!





# EXPLORE DOWNTOWN

Downtown is where you can do as the locals do! You'll find great local shops, an award-winning Farmers Market, a historic 1950s theater and more!

## FARMERS MARKET

The Grand Prairie Farmers Market sells fresh fruits and vegetables as well as spices, candles, soaps, coffee, honey and an array of other items at Market Square in addition to monthly special events. Open Saturdays, April-December, 8 a.m.- 1 p.m.

120 W. Main Street  
972-237-4559 • [grandfungp.com/farmersmarket](http://grandfungp.com/farmersmarket)

## FIREHOUSE GASTRO PARK

Located in our original Fire Station #1, Firehouse Gastro Park is a Grand Prairie staple! This sprawling space features indoor and outdoor dining, full service bar, family-friendly green-space, a coffee shoppe, a smokehouse and diverse delectables including Nashville hot chicken, artisan burgers, and LA's very own Mama's Medicine cocktails. You'll find live music here almost every weekend!

321 W. Main Street  
469-909-4111 • [fhgp.info](http://fhgp.info)

## GRAND PRAIRIE HISTORICAL MUSEUM

The Grand Prairie Historical Organization promotes and preserves the history of Grand Prairie. The organization is run by committed volunteers that are dedicated to Grand Prairie history and maintain the highest standards of excellence.

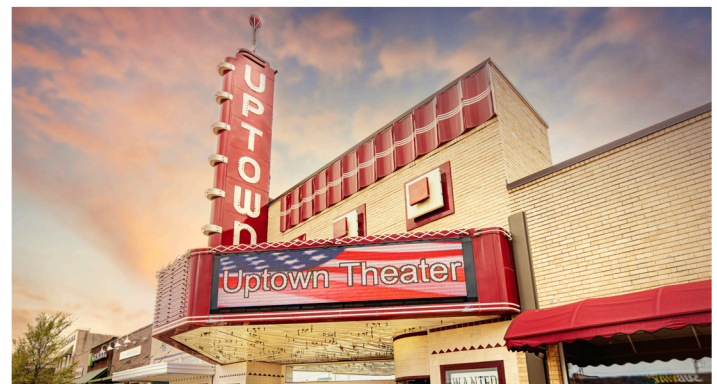
1516 W. Main Street  
469-431-4629 • [gphistorical.com](http://gphistorical.com)  
Open Monday - Saturday 1 - 4 p.m.

LOCAL TIP!  
ORDER THE  
DIRTY BIRD  
FRIES!

## UPTOWN THEATER

This historic downtown landmark has been restored to its 1950's glory and serves as home for productions of the Grand Prairie Arts Council as well as regional and national touring acts including concerts, dance and theatrical performances. Visit our website for a listing of current performances.

120 E. Main Street  
972-237-8786 • [uptowntheatergp.com](http://uptowntheatergp.com)





# EXPLORE EPIC CENTRAL

EpicCentral is a 172-acre park site located off George W. Bush Tollway (Highway 161). Reflecting innovation and community investment, EpicCentral is home to many family-friendly attractions, restaurants, hotels, convention center, a water show & many more amenities for your family to enjoy!

## EPIC WATERS INDOOR WATERPARK

This one-of-a-kind indoor water park with retractable roof includes an arcade, party rooms, and fun for all ages. Epic Waters features slides and attractions never before seen, such as the longest indoor lazy river in Texas, the tallest indoor Aqualoop in the United States, and Texas' first double Flow Rider Surfing Machine.



2970 Epic Place  
972-337-3131 • [epicwatersgp.com](http://epicwatersgp.com)

## THE EPIC

The Epic is Reimagining Recreation by showcasing industry leading fitness, athletics, aquatics, fine arts, media arts, and youth activities all in one incredible 120,000 square foot facility. The Epic is also home to The Epic Theater where you can find some great live entertainment!

2960 Epic Place  
972-339-EPIC • [jointheepic.com](http://jointheepic.com)





**CHICKEN N PICKLE**

This unique, indoor/outdoor entertainment complex mission is to provide an atmosphere that fosters fun, friendship, and community for all ages. Here you'll find fast-casual dining, 11 pickleball courts, shuffleboard courts, a bar and entertainment space, an outdoor game yard, and a game room & more!

2965 S. Hwy 161  
469-943-1410 • [chickennpickle.com](http://chickennpickle.com)

**BOLDER ADVENTURE PARK**

This family entertainment facility provides adventure-based attractions in a 66,000-square-foot pneumatic dome structure with ceiling heights of approximately 75 feet. Guests will be offered a truly unique opportunity to experience rock climbing, zip lines, Via Ferrata, ropes courses, tubing slides, synthetic ice skating, adventure nets and more.

2324 W. Warrior Trail  
469-858-0577 • [bolderadventurepark.com](http://bolderadventurepark.com)

**MAIN EVENT**

Main Event offers a unique, "EatBowlPlay" experience featuring state-of-the-art bowling, multi-level laser tag, thrilling high ropes adventure courses, captivating game rooms featuring the latest video and amusement, stylish billiards, energetic bars and a high-quality restaurant.

3106 S. State Hwy 161  
972-641-2695 • [mainevent.com](http://mainevent.com)



**PLAYGRAND ADVENTURES**

PlayGrand Adventures is an exciting opportunity to provide a safe and fun playground experience of 'EPIC' proportions for all ages and abilities. The playground includes adventure areas which are designed to stimulate, challenge, and encourage development of several skill sets while providing social interaction, sense of discovery, creativity, and exercise.

2100 Epic Place  
[playgrandadventures.com](http://playgrandadventures.com)



**THE SUMMIT**

The Summit is a Premier 50+ club for active adults located in Grand Prairie's Central Park. This 59,000-square-foot center offers top-of-the-line fitness equipment, indoor walking/jogging track, gymnasium, infinity edge heated pool and spa, sauna, theater, billiards room, café and more.

2975 Esplanade  
972-237-4141 • [grandfungp.com/thesummit](http://grandfungp.com/thesummit)





# EXPLORE THE SHOPPING DISTRICT

No visit is complete without some shopping right? In our shopping district we have everything from premium outlets with name brand stores to America's largest marketplace, to one of the largest hubs for eastern good & so much more.

## ASIA TIMES SQUARE & HONG KONG MARKET

One of the largest Asian grocery stores in the DFW metropolitan area, Hong Kong Market provides a wide selection of groceries from Hong Kong, China, Vietnam, Japan, Korea, Africa, Indonesia, Thailand, Singapore, the Philippines and more. Along with outstanding customer service, Hong Kong Market offers the freshest produce, meat and live seafood.

2615 W. Pioneer Parkway  
972-975-5100  
hkmt.com • asiatictimesquare.com



LOCAL TIP!  
CATCH ONE OF  
THEIR MANY SPECIAL  
EVENTS!

## GRAND PRAIRIE PREMIUM OUTLETS

This shopping destination features more than 100 stores with savings of 25% to 65%. Stores include Bloomingdale's Outlet, Kate Spade, Michael Kors, Saks Fifth Avenue OFF 5TH, Tommy Bahama, Nike, Polo Ralph Lauren and more.

2950 West Interstate 20  
972-602-8383 • premiumoutlets.com/grandprairie

## IKEA

This world-renowned Swedish shopping destination offers home furnishings of good design and function at low prices. This 290,000-square-foot store is the second of its kind in the Dallas-Fort Worth Metroplex and the fourth in the state of Texas.

1000 IKEA Way • IKEA.com

## TRADERS VILLAGE

"America's #1 Marketplace" features more than 3,500 vendors selling their wares every Saturday and Sunday, year round. More than 3 million visitors a year are attracted to the 161-acre site, which also offers rides including their new 87 feet high roller coaster, The Prairie Screamer, arcade games and a wide variety of state fair-style foods. Features festivals and events throughout the year.

2602 Mayfield Road  
972-647-2331 • tradersvillage.com

LOCAL TIP!  
IF YOU'RE LOOKING  
TO STAY OVERNIGHT,  
TRADERS VILLAGE  
ALSO HAS A RV PARK!



GRAB FUN BY THE HORNS

## MORE FUN NEARBY!

### FORUM BOWLING LANES

2001 S. Great Southwest Parkway  
972-641-4406

Sixty lanes available for recreation and league play.

### FORUM ROLLER WORLD

1900 S. Great Southwest Parkway  
972-641-0661 • forumrollerworld.com

Public skating, private parties and skating lessons.

### CINEMARK MOVIES 16

220 W. Westchester Parkway  
972-263-0104

Seventeen screens of the latest offerings from Hollywood.

### PREMIERE LUX 10 & PIZZA PUB

510 E. Westchester Parkway  
972-299-3456

State of the Art theatre, complete with arcade, plush recliner seats, tables, food and full bar service!



# EXPLORE LAKE PARKS

Set among rolling hills, fishing, boating, swimming and water skiing are popular water sports on Joe Pool Lake. This 7,500-acre lake has a full service marina, picnicking, camping, cabins and parks on the lake's shore.

## LYNN CREEK PARK

A day park with boat ramps, group picnic sites, beaches, volleyball, playground, restrooms, full-service marina, natural surface trails, driving range on Joe Pool Lake. Two miles south of I-20, use Great Southwest Parkway exit. Or from Highway 360 head east on Mildred Walker Parkway.

5610 Lake Ridge Parkway  
972-237-4120 • lakeparks.net

## BLUE SUNSHINE PATIO BAR & GRILL

Adjacent to the Lynn Creek Marina store, the Blue Sunshine Patio Bar & Grill formerly, the Oasis Restaurant is a one-of-a-kind dining experience in the Dallas-Fort Worth area. The floating restaurant is a popular gathering place and favorite of locals that go to enjoy the lakeside views, food, drinks and live entertainment.

5700 Lake Ridge Parkway  
817-640-7676 • bluesunshinepatiobar.com

## LYNN CREEK MARINA

Lynn Creek Marina is located on the beautiful Joe Pool Lake in Grand Prairie, Texas. The Marina offers 530 wet slips, a full-service marine center, a dry storage facility, a restaurant, and even a driving range for the avid golfer!

5700 Lake Ridge Parkway  
817-640-4200 • LynnCreekMarina.com

## THE WAVE

The Wave Excursion Boat is a one-of-a-kind in the state of Texas. This is the largest excursion boat at 60' ft. long and 24' feet wide with a top deck and two slides. Make your time on the lake one you'll never forget! Reservations require a 24 hour notice. Book your spot online!

5700 Lake Ridge Parkway  
817-640-4200 • lynnCreekMarina.com



LOCAL TIP!  
BOOK EARLY FOR  
THE SUMMERTIME!

# Grand Prairie

— T E X A S —

## PARKS, ARTS & RECREATION

For more than 50 years, the Grand Prairie Parks, Arts & Recreation Department has been dedicated to creating a GRAND lifestyle. The Grand Prairie Parks, Arts & Recreation Department features world class parks and facilities, a wide-array of exciting program opportunities, and numerous special events throughout the year.

The City of Grand Prairie has more than 5,000 park acres, including the exciting 3,000 acres surrounding Joe Pool Lake. The staff is proud to be the caretakers for the citizens of Grand Prairie and welcomes comments about the Parks system or recreation offerings of the city.

Dedicated to providing world class service, the department was nominated by the National Recreation and Parks Association (NRPA) as a finalist to the National Gold Medal Award, one of only four in America, in 2007 and 2008, 2016 and 2017, and the department won the Gold Medal in 2008 and 2017!

Grand Prairie Parks, Arts &  
Recreation Department Admin Office  
400 College St. Grand Prairie • 75050  
972-237-8100 • grandfungp.com





# EXPLORE LAKE PARKS

## LOYD PARK

This overnight park features an 18-room Lodge, campsites, cabins and a camp store. Plus hiking trails, Walnut Creek Paddling Trail, off-road bicycle trails, equestrian trails, beach, playground, boat docks, softball field and a fishing dock.

3401 Ragland Road  
972-237-4120 • [loydpark.com](http://loydpark.com)

### LOYD PARK CABINS AND CAMP STORE

Camp in style with eight cabins and a camp store at Loyd Park on the shore of Joe Pool Lake. Each cabin sleeps six and has one or two bedrooms. The cabins are equipped with satellite TV, air conditioning, heating, stove, oven, refrigerator and sink, and bathrooms with showers. All are fully stocked with bed linens, towels and kitchen utensils. A perfect blend for your sense of adventure and need for the comforts of home. A Good Sam park.

3401 Ragland Road  
972-237-4120 • [loydpark.com](http://loydpark.com)

### YURTS

Enjoy the most popular glamping experience! Amenities include an above-ground propane fire pit on a paved seating area with outdoor furniture, walk-in shower with rain shower head, quartz counter tops, cooktop and microwave, satellite TV, high-end luxury furniture, queen bed, skylight, heat and air conditioning, private deck, and much more!

3401 Ragland Road  
[LoydPark.com](http://LoydPark.com) • 972-237-4120



## THE LODGE GLAMPING AT LOYD PARK

The Lodge at Loyd Park is an overnight accommodation located on the west shore of Joe Pool Lake that is fully equipped for an extended getaway by providing guests with homelike comfort and convenience. This 18-bedroom lodge is the perfect place to host family reunions, corporate retreats, group getaways, and much more!

#### LODGE AMENITIES

Private Parking • Patio with Fire Pit • Free Wi-Fi  
Covered Porch with Rocking Chairs • Dish TV • Fireplace  
Double Queen Rooms • Single King Rooms • BBQ Grill  
Full Kitchen • Large Family/Meeting Room

#### PARK AMENITIES

221 Camping Sites • Water & 30 Amp Electric Hookups  
All Concrete Pads • Restrooms & Showers  
Picnic Areas • Large Picnic Pavilions • Changing House  
Camping Cabins • Camp Store • Swimming Beach  
Four-Lane Boat Ramp with Trailer Parking • Boat Dock  
Volleyball & Softball Field • Hiking, Biking & Equestrian  
Trails Walnut Creek Paddling Trail  
Rentals: Golf Carts, Canoes, Kayaks & Bicycles

#### HOURS

Gate House: 24 hours a day, all year long  
Office/Reservations: Monday-Friday, 8 a.m.-4:30 p.m.

[LOYDPARK.COM](http://LOYDPARK.COM)

3401 RAGLAND ROAD • 972-237-4120



# BRAGGING RIGHTS

# STAY SOCIAL

We love to see how much fun you're having in Grand Prairie! Tag us @visit\_grandprairie or use #GoGrandGP in all your photos!

**#1** Best Farmers Market in Texas  
*by American Farmland Trust (2021)*

**#1** Asia Times Square: Best Food Court in Dallas  
*by Dallas Observer (2021)*

**#1** Best Waterpark in DFW:  
Epic Waters Indoor Waterpark  
*by Dallas Observer (2021)*

**#3** Best Staycation in the U.S  
*by WalletHub.com (2021)*

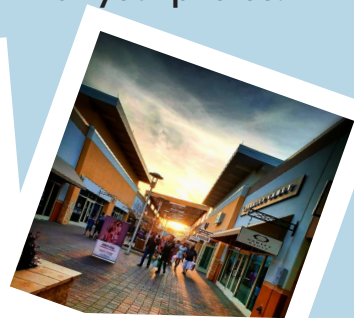
**#2** Happiest City in Texas  
*by WalletHub.com (2022)*

**#8** Best City for Hipsters  
*by Lawnstarter.com (2021)*

**#9** Safest City in Texas  
*FBI (2022)*

## EVEN OUR BBQ IS A BIG DEAL!

Zavala's: Top 50 Best BBQ Joints in Texas  
*by Texas Monthly (2021)*







## NEAR ENTERTAINMENT DISTRICT

|  |                                                               |   |   |   |
|--|---------------------------------------------------------------|---|---|---|
|  | 817-633-6311<br>bestwestern.com<br>2075 N. Hwy 360            | ● | ● | ● |
|  | 214-518-6776<br>choicehotels.com<br>702 Paddock Way           | ● | ● | ● |
|  | 972-988-8989<br>radissonhotelsamericas.com<br>2050 N. Hwy 360 | ● | ● | ● |
|  | 972-988-6800<br>hyatt.com<br>1542 Hwy 360                     | ● | ● | ● |
|  | 469-999-0875<br>wyndamhotels.com<br>380 E. Palace Pkwy        | ● | ● | ● |
|  | 972-975-0000<br>motel6.com<br>1108 N. Hwy 360                 | ● | ● | ● |
|  | 972-641-3201<br>motel6.com<br>1404 S. Hwy 161                 | ● | ● | ● |
|  | 972-642-9424<br>motel6.com<br>406 E. Palace Pkwy              | ● | ● | ● |
|  | 972-263-4421<br>wyndamhotels.com<br>402 E. Palace Pkwy        | ● | ● | ● |
|  | 469-460-7300<br>hilton.com<br>1520 N. Hwy 360                 | ● | ● | ● |

## NEAR DOWNTOWN

|  |                                                      |   |  |  |
|--|------------------------------------------------------|---|--|--|
|  | 972-263-8851<br>wyndamhotels.com<br>1114 E. Main St. | ● |  |  |
|--|------------------------------------------------------|---|--|--|

## NEAR LAKE PARKS

|  |                                                  |  |  |  |
|--|--------------------------------------------------|--|--|--|
|  | 972-237-4120<br>loydpark.com<br>3401 Ragland Rd. |  |  |  |
|--|--------------------------------------------------|--|--|--|

## NEAR SHOPPING DISTRICT

|                         |                                                           |   |   |   |
|-------------------------|-----------------------------------------------------------|---|---|---|
|                         | 214-412-1022<br>ihg.com<br>2504 I-20 West                 | ● | ● | ● |
|                         | 972-264-4002<br>ihg.com<br>4112 S. Carrier Pkwy           | ● | ● | ● |
|                         | 972-606-1111<br>hilton.com<br>2123 W. I-20                | ● | ● | ● |
|                         | 214-705-2815<br>wyndamhotels.com<br>2131 W. I-20          | ● | ● | ● |
|                         | 972-602-9400<br>choicehotels.com<br>3891 S. Great SW Pkwy | ● | ● | ● |
|                         | 972-606-2800<br>wyndamhotels.com<br>4020 S. Great SW Pkwy | ● | ● | ● |
|                         | 972-564-4444<br>ihg.com<br>4043 Lake Ridge Pkwy           | ● | ● | ● |
| Traders Village RV Park | 972-647-8205<br>tradersvillage.com<br>2602 Mayfield Rd.   | ● |   |   |

## NEAR EPIC CENTRAL

|  |                                                  |   |  |   |
|--|--------------------------------------------------|---|--|---|
|  | 866-261-5730<br>marriott.com<br>2850 S. Hwy. 161 | ● |  | ● |
|  | COMING LATE 2023                                 |   |  |   |
|  | COMING LATE 2023                                 |   |  |   |
|  | COMING LATE 2023                                 |   |  |   |

book online!



# TAKE A HIKE

## DISC GOLF AT TURNER PARK

Turner Park's disc golf course is challenging and fun as it rolls with the hills of the park and weaves among the many trees and creeks.

Beltline Road at Tarrant Road  
972-237-8100 • grandfungp.com

## MIKE LEWIS PARK

Fitness trail, horseshoe pits, sand volleyball court, fishing pond, softball fields, playground, pavilion, riding arena, basketball courts

2600 block of North Carrier Parkway



## FISH CREEK LINEAR PARK

Three-mile trail with rest stops (connects with four miles of trail in Arlington), basketball courts, pavilion, four playgrounds, two multi-purpose fields, practice backstop and individual picnic tables.

4500 Coventry Drive

## MCFALLS PARK

Swimming pool, six lighted baseball fields, two soccer fields, concession building, pavilion/restrooms, playground and pond.

505 Dickey Road

## CENTRAL BARK

An off-leash dog park, Central Bark is a park for people who love dogs. Dogs can play off leash in one of three exercise areas. The park is open from dawn to dusk.

2222 W. Warrior Trail • 972-237-8575

## LONE STAR TRAIL

3.2-mile hike and bike linear park that runs along the Trinity River and through the Grand Prairie Entertainment District.

Near Gate 1 at Lone Star Park  
2170 N. Belt Line Rd.

**LOCAL TIP!**  
PARK AT THE  
TOURIST CENTER  
AND SAY HI!

*check out more parks & recreational activities!*





# GOLF

## LYNN CREEK GOLF RANGE

Driving range with mats, grass tee boxes, professional putting green, and lights.

5720 Lake Ridge Parkway  
817-583-6759



## RIVERSIDE GOLF COURSE

An 18-hole course, driving range, putting green, snack bar.

3000 Riverside Pkwy  
817-640-7800

## TANGLE RIDGE GOLF COURSE

Top ranked Tangle Ridge offers Champion Bermuda greens set in rolling hills and a natural landscape. Tangle Ridge gives you the feel of the Texas Hill Country.

818 Tangle Ridge Drive  
972-299-6837 • tangleridge.com

## PRAIRIE LAKES GOLF COURSE

Always a "Place to Play," this 27-hole course set on the shores of Mountain Creek Lake offers fast, affordable play. With the largest practice putting green in Texas and the local favorite Eddleman's BBQ serving slow cooked brisket every day, Prairie Lakes offers a "grand" golfing experience.

3202 SE 14th Street  
972-237-4156  
prairielakesgolf.com



Via  
Grand  
Prairie



**\$3 to get  
anywhere in  
Grand Prairie.**

[gptx.org/viagp](https://gptx.org/viagp)





# A LIVE MUSIC DESTINATION!

Grand Prairie is a Texas Music Friendly Community!



check out where you can catch live music in GP!



## MUSIC VENUES

**Action Park Grand Prairie**  
1002 Lone Star Pkwy | [actionparkgp.com](http://actionparkgp.com)

**Asia Times Square**  
2615 W. Pioneer Pkwy | [asiatimesquare.com](http://asiatimesquare.com)

**Blue Sunshine Patio & Bar**  
5700 Lake Ridge Pkwy | [bluesunshinepatiobar.com](http://bluesunshinepatiobar.com)

**Epic Theater**  
2960 Epic Place. | [jointheepic.com](http://jointheepic.com)

**Farmers Market**  
120 W. Main St. | [gptx.org/farmers-market](http://gptx.org/farmers-market)

**Firehouse Gastro Park**  
321 W. Main St. | [fhgp.info](http://fhgp.info)

**Lone Star Park**  
1000 Lone Star Pkwy | [lonestarpark.com](http://lonestarpark.com)

**Texas Trust CU Theatre**  
1001 Texas Trust Way | [texasrustcutheatre.com](http://texasrustcutheatre.com)

**The Daiquiri Shoppe**  
684 W. Pioneer Pkwy | [theosgrillandbar.com](http://theosgrillandbar.com)

**Theo's Bar & Grill**  
107 NW 8th St. | [uptowntheatergp.com](http://uptowntheatergp.com)

**Traders Village**  
2602 Mayfield Rd. | [tradersvillage.com](http://tradersvillage.com)

**Uptown Theater & More!**  
120 E. Main St. | [uptowntheatergp.com](http://uptowntheatergp.com)





# MEETING SPACES

## ASIA TIMES SQUARE

2615 W. Pioneer Parkway  
972-975-5100  
hkmkt.com  
asiatimesquare.com

## FIREHOUSE GASTRO PARK

321 W. Main Street  
469-909-4111 • fhgp.info

## GRAND PRAIRIE MUNICIPAL AIRPORT

3116 S. Great Southwest Parkway  
972-237-7591 • gptx.org

## LONE STAR PARK

1000 Lone Star Parkway  
972-263-7223 • lonestarpark.com

## RUTHE JACKSON CENTER

3113 S. Carrier Parkway  
972-237-7500 • ruthejacksoncenter.com

## THE EPIC

2960 Epic Place  
972-339-EPIC • jointheepic.com

## THE LODGE AT LOYD PARK

3401 Ragland Road  
972-237-4120 • loydpark.com

# A FOODIES DREAM



Grand Prairie offers many exciting dining experiences, from top awarded BBQ to a floating restaurant to authentic Asian dishes & many more.

EXPLORE  
YOUR  
OPTIONS



FIREHOUSE GASTRO PARK



# SPRING

Cajun Fest

*Traders Village*

Main Street Fest

*Downtown*

Thoroughbred Racing

*Lone Star Park*

Kid Fest

*Traders Village*

Farmers Market Opens

# SUMMER

Crawfish Boil

*Farmers Market*

Lone Stars & Stripes

*Lone Star Park*

Hatch Chile Fest

*Farmers Market*

Prairie Playland

*Traders Village*

Asian Pacific American  
Heritage Festival

*Asia Times Square*

# FALL

Mid Autumn Fest

*Asia Times Square*

Music & Food Fest

*Asia Times Square*

Quarter Horse Racing

*Lone Star Park*

Tejano Fest

*Traders Village*

# WINTER

Lunar New Year

*Asia Times Square*

Prairie Lights

*Lynn Creek Marina*

Holiday Market with  
Santa

*Traders Village*



**CHECK  
OUT OUR  
SEASONAL  
GUIDES**



# Prairie Lights

**Opens Thanksgiving Day**

**Lynn Creek Park on Joe Pool Lake**

**5610 Lake Ridge Parkway**

**972-237-GLOW • prairielights.org**

Be dazzled as you drive through four million lights set along two miles of path. Hundreds of NEW displays in shapes of all kinds line and arch over the roads.

Half way through the drive get out of your car for a stop at Holiday Village where you will find food, gifts, Santa, Lighted Walk-Through Forest and a holiday show spectacular. The grand finale is the world's largest light tunnel.



FORT WORTH > ARLINGTON

- 1 Fort Worth Stockyards – Billy Bob’s Texas » Texas Cowboy Hall of Fame
- 2 Fort Worth Zoo
- 3 Fort Worth Cultural District – Amon Carter Museum of American Art » Kimbell Art Museum » Will Rogers Memorial » Fort Worth Museum of Science and History » Fort Worth Community Arts Center » National Cowgirl Museum and Hall of Fame » Fort Worth Botanic Garden/ Japanese Garden
- 4 Texas Civil War Museum
- 5 National Multicultural Western
- 6 Six Flags Over Texas » International Bowling Museum & Hall of Fame

ARLINGTON > FORT WORTH

- 7 Dallas Cowboy AT&T Stadium » Choctaw Stadium » Texas Live
- 8 Six Flags Hurricane Harbor
- 9 Bureau of Engraving and Printing

GRAPEVINE > FORT WORTH > DENTON

COPPELL > FLOWER MOUND

- 10 Grapevine Mills » Lego Land » Sea Life Aquarium
- 11 Grapevine Vintage Railroad
- 12 Texas Motor Speedway

IRVING > DALLAS > ADDISON > RICHARDSON > GARLAND PLANO > THE COLONY > ALLEN > MCKINNEY > LEWISVILLE

- 13 Irving Arts Center
- 14 Irving Mall
- 15 The Star in Frisco
- 16 Speed Zone
- 17 Galleria Dallas
- 18 Allen Premium Outlets
- 19 FC Dallas Stadium
- 20 Southfork Ranch

Where will your story begin? With more than 50 cities in the Dallas/Fort Worth Metroplex, it’s easy to get overwhelmed with everything there is to do and see. Request a discovery guide online or visit one of the local Tourist Information Centers or Visitors Bureau in cities throughout DFW.

DALLAS

- Downtown Dallas » Deep Ellum » West End 21
- 6th Floor Museum – JFK
- Perot Museum of Nature & Science
- Arts District – Dallas Museum of Art » Nasher » Winspear Opera House
- Dallas World Aquarium & Rainforest

American Airlines Center 22

Medieval Times 23

Fair Park – State Fair Site » Cotton Bowl Stadium 24

Music Hall » Children’s Aquarium at Fair Park

Dallas Arboretum 25

NorthPark Mall 26

DALLAS > OAK CLIFF > MESQUITE

Dallas Zoo 27

Bishop Arts District 28

Mesquite Rodeo 29

CEDAR HILL

Hillside Village 31

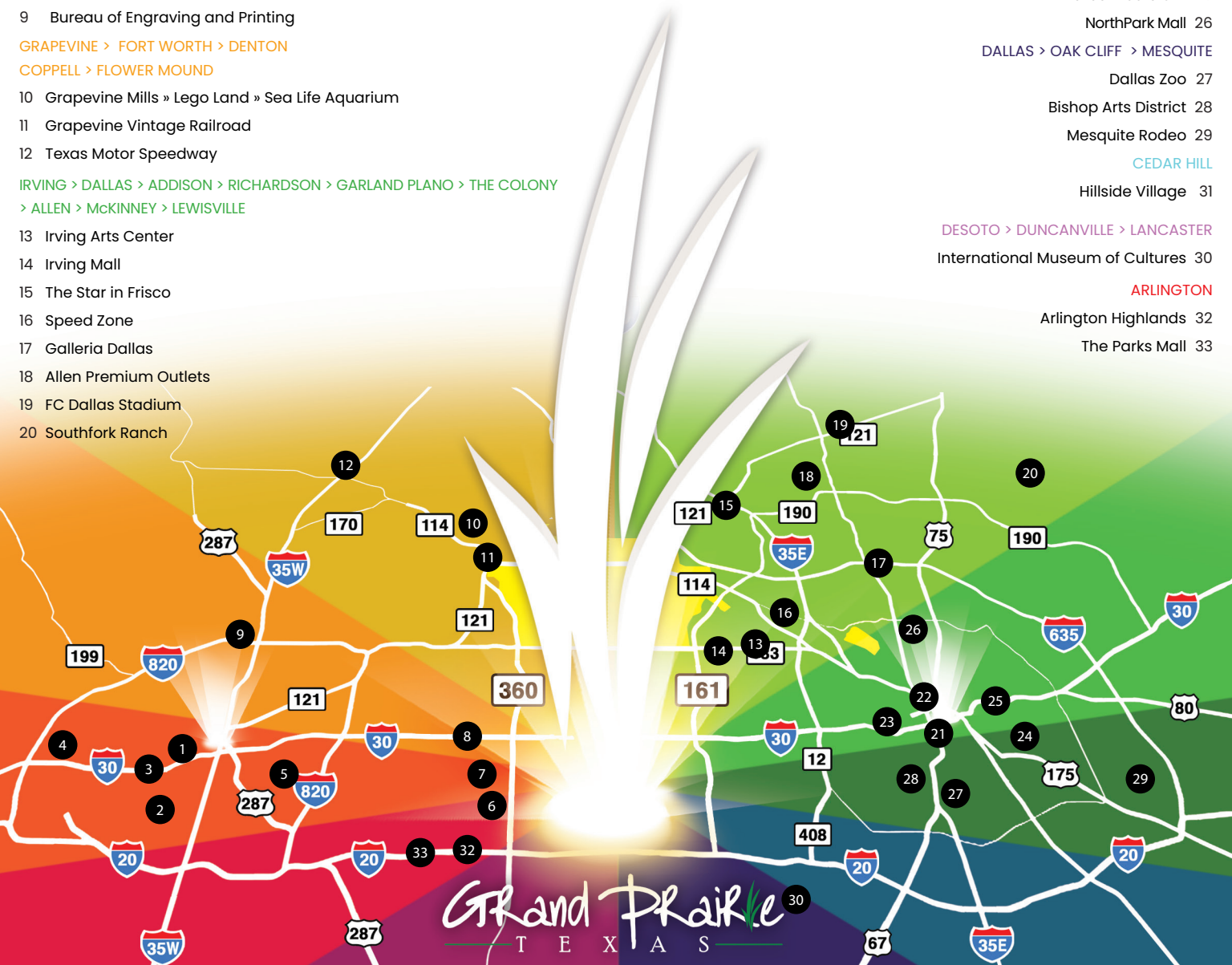
DESOTO > DUNCANVILLE > LANCASTER

International Museum of Cultures 30

ARLINGTON

Arlington Highlands 32

The Parks Mall 33







**10% OFF IN-STORE PURCHASE**  
OR  
**BUY ONE/GET ONE SKATE SESSION**

Limit one per customer. Limit one coupon redemption every 180 days.

1002 Lone star Parkway • 972-262-4479 • actionparkgp.com • Exp. 12/23



**SAVE \$5  
MON-FRI!**

Present this coupon to receive \$5 off admission now through December 31, 2023. Valid for up to 6 tickets per coupon. Cannot be combined with any other offer. **NOT VALID DURING THE MONTH OF MARCH!**

**COUPON CODE: 8023001**

2970 Epic Place Grand Prairie TX 75052 | 972-337-3131 | EpicWatersGP.com

Exp. 12/23



**Grand Prairie Arts Council**  
**BUY ONE  
GET ONE FREE**  
Theatre Ticket Voucher

Voucher redeemable for one free reserved seat ticket to any Arts Council Theatre production, when one is purchased at regular price. Please redeem this voucher through the Uptown Theater Box Office. Customer responsible for any additional ticket costs including Uptown Theater fees and processing fees. No additional discounts apply when using voucher. No cash value.

Uptown Theater • 120 E. Main St. • 972-642-ARTS • artsgp.org • Exp. 12/23



**\$2 OFF**  
OUR SUPER FUN COMBO TICKET

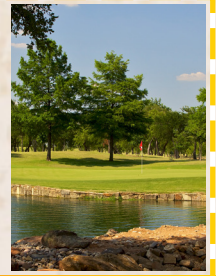
601 E. Palace Pkwy • Use code GPCVB. Not valid with any other offers. Limit 6 people • ripleys.com/grandprairie Exp. 12/23



Green Fee & Cart Non-Holiday • Monday-Thursday

**\$29.95**

May not be combined with other offers.  
Not valid for tournament play.  
Must reserve Tee-Time



3202 SE 14th Street • 972-237-4156 • prairielakesgolf.com • Exp. 12/23



Camping on Joe Pool Lake  
**ONE NIGHT FREE VEHICLE  
ENTRY WITH CAMPING STAY**  
with camping stay of 2 nights or more

**1/2 OFF FULL DAY CANOE  
OR KAYAK RENTAL**  
Not valid with any other discounts.  
No cash value. Please call ahead to  
make reservations.

Operated by the City of Grand Prairie  
Parks, Arts & Recreation Department

Operated by the City of Grand Prairie  
Parks, Arts & Recreation Department

3401 Ragland Road • 972-237-4120 • loydpark.com • Exp. 12/23



**BLUE GOOSE  
CANTINA**

**FREE CHIPS & SALSA**  
\$3 HOUSE MARGARITAS ON TUESDAY & THURSDAY  
**OPEN EARLY 2023**

bluegoosecantina.com • 2536 W. I -20 • Exp. 12/23

**Fire  
House  
Gastro  
Park**

- Coffee Shoppe
- Restaurant & Bar
- In/outdoor seating
- Event Space Rentals
- Food/Bar Catering
- Live Music weekly

**10% OFF** ALL FOOD, COFFEE, AND  
NON ALCOHOL DRINKS

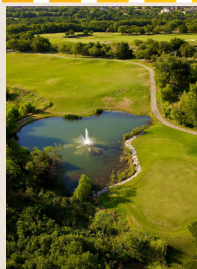
**FHGP.INFO**

310-927-1411 • firehousegp.com • 321 Main Street • Exp. 12/23

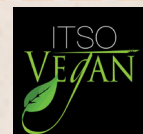
**Tangle Ridge**  
GOLF CLUB • GRAND PRAIRIE TEXAS  
Green Fee & 1/2 Cart Non-Holiday • Monday-Thursday

**\$45**

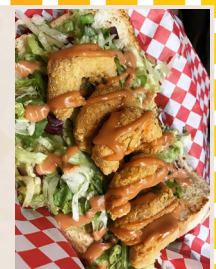
May not be combined with other offers.  
Not valid for tournament play.  
Must reserve Tee-Time



818 Tangle Ridge Dr. • 972-299-6837 • tangleridge.com • Exp. 12/23



**10% OFF**  
ONLINE ORDERS  
Coupon code: ITSLOVESGP  
Exp. 12/23



830 Mayfield Rd. • 469-909-4090 • itsovegan.com • Exp. 12/23



# Outlaw's

## Bar-B-Que & Grill



**1/2 PRICE DINNER**  
 Buy Any Dinner at Regular Price & Get Equal or Lesser Value Plate at 1/2 Price.  
 Sunday-Thursdays, dine-in only.  
 Present coupon when ordering.  
 Not valid with any other offer.

**BUY 1, GET 1 FREE**  
 Buy any breakfast plate, 2 drinks & get second plate free!  
 Sunday-Thursdays, dine-in only.  
 Present coupon when ordering.  
 Not valid with any other offer.

2334 S. Beltline • 972-263-6063 • outlawssbbq.com • Exp. 12/23



**FREE EGG ROLL**  
 with any purchase of an entrée and a drink  
 (from main menu only)



2615 W. Pioneer Parkway • 214-788-2828 • asiaticimessquare.com • Exp. 12/23



# ROMA'S

## ITALIAN BISTRO

Purchase an entrée and get a  
**FREE DESSERT**  
 Present coupon when ordering. Not valid with any other offer.  
 Coupon must be surrendered upon use.  
 Exp. 12/23

101 W. Main St. • 214-412-2947 • romasbistro.net • Dine-In, Pick-Up, Delivery & Catering!



# TRUNKSTOP

gift shop on the prairie

**25% OFF ONE ITEM**

Present coupon with purchase. Not valid with any other offer.  
 Not valid with sale items. Coupon must be surrendered upon use.

2170 N. Belt Line Rd. • 972-595-5400 • Exp. 12/23

# PLAN YOUR STAY

BOOK ONLINE!



FOR MORE DEALS SCAN HERE!





# GET YOUR GP SWAG!



## TRUNK STOP

gift shop on the prairie



# WELCOME TO GRAND PRAIRIE!

# TEXAS



## VISIT GRAND PRAIRIE

—VISITGRANDPRAIRIETX.COM—

### WE'RE SO GLAD YOU'RE HERE!

### VISITGRANDPRAIRIETX.COM

### 1-800-288-8FUN

2170 N. Belt Line Rd.  
Grand Prairie, TX 75050  
Monday - Friday: 9 a.m. - 5 p.m.  
Saturday: 9 a.m. - 3 p.m.



VISIT  
**GRAND PRAIRIE**

—VISITGRANDPRAIRIETX.COM—

**TOURIST INFORMATION CENTER**

**2170 N. Belt Line Rd.**

**Grand Prairie, TX 75050**



PRESORTED USPS  
MARKETING MAIL  
U.S. POSTAGE  
PAID  
MAILED FROM  
ZIP CODE 76051  
PERMIT NO. 388